

SCALPER



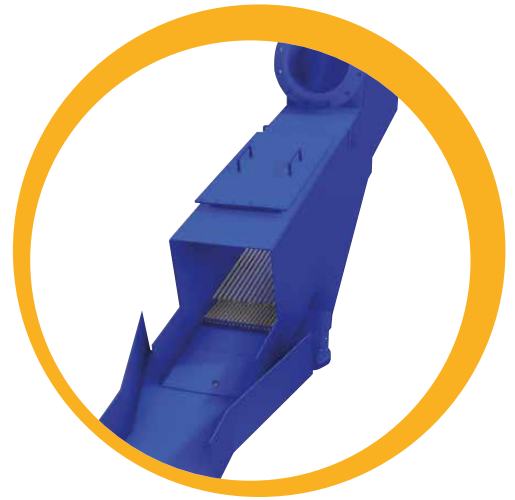
ROMAR
INTERNATIONAL

SCALPER

APPLICATION

The ROMAR Scalper unit is suitable for use in zone 1 areas and can be coupled with the SS1000. The Scalper is used to remove oversize ferrous based (steel) swarf and debris from milling/drilling fluids during down-hole milling operations before it reaches the SS1000.

The Scalper encompasses a 6" vent to remove vapours and fumes from the work area and also provides a swivel chute to direct milling materials into two skips.



LIQUID FLOW CAPABILITY

1200 GPM

SWARF REMOVAL CAPABILITY

3500 kg/hr

DIMENSION (W x L x H)

400 x 1468 x 1680mm

GROSS TRANSPORT WEIGHT (kg)

400

GROSS TRANSPORT WEIGHT FRAME (kg)

400

OPERATING WEIGHT (kg)

400

TIE-IN POINTS

Inlet: 12" ANSI 150 Flange
Outlet: 12" ANSI 150 Flange
